

KOLDLOK®

Installation Guide

KoldLok® 60" Extended Raised Floor Grommets

Part Numbers

3" x 60" - 10097

6" x 60" - 10098

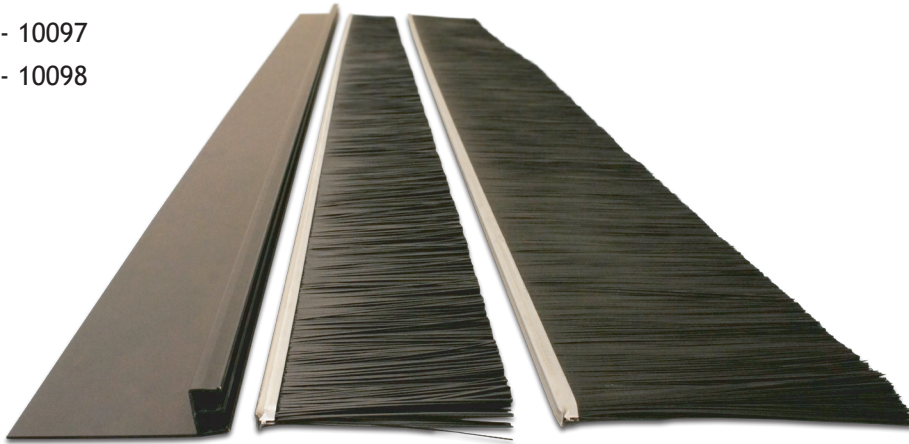


Table of Contents

Tools & Preparation Required for Installation	Page 2
Product Components	Page 3
Modifications of Grommets	Page 4
Installation Procedures	Page 5
General Information	Page 6
Warranty	Page 7

Each carton contains the following items:

KoldLok Extended Raised Floor Grommets (10)

Installation Guide (1)

Optional mounting tape or screws are available for custom installations.
Minimum order may apply. Please call for details.

- Non-Particulating Double Sided Adhesive Tape - 36 Yard Roll: Part No. 20107
- Self-Tapping Screws - 600 Pieces: Part No. 20197

Tools and Preparation Required for Installation

Tools Required:

- Bandsaw, table saw, miter saw or other appropriate non-ferrous metal cutting tool (Warning: Do not attempt to cut aluminum with wood cutting blades.)
- Hand tools, including bolt cutters, pliers, hammer (or mallet), stake and metal file

Dimensions and Cutting Requirements	Inches (W x D)	Millimeters (W x D)
Part No. 10097 (3"x60") - Overall size	60" x 5.998"	610 x 152mm
Maximum cutout size sealed	60" x 4"	610 x 102mm
Usable cable area	60" x 2.5"	610 x 64mm
Product height above the raised floor	1" w/ adhesive option	25mm w/ adhesive option
Part No. 10098 (6"x60") - Overall size	60" x 9.025"	1,524 x 229mm
Maximum cutout size sealed	60" x 7"	1,524 x 178mm
Usable cable area	60" x 5.5"	1,524 x 140mm
Product height above the raised floor	1" w/ adhesive option	25mm w/ adhesive option

Preparation:

Determine the maximum dimensions of the trimmed cutout or opening in the raised floor. To ensure stability and proper sealing, the KoldLok Extended Raised Floor Grommet should have a minimum surface-to-floor contact of 1 inch (25mm) on three sides of the cutout (Does not apply when grommet is installed facing down - See Install Procedures for more information) Accurately measure and mark the desired length on the metal extrusion for cutting.

Determine whether to install grommets by screwing the product directly to the floor using self-tapping screws or by applying double sided adhesive tape. Optional mounting screws or non-particulating adhesive tape are available for custom installation. Minimum order may apply. Please call for details.

Clean the tile and bottom surface of the grommet using an alcohol wipe or a clean cotton cloth, damp with a solution of at least 50 percent isopropyl alcohol.

HELPFUL TIP: When choosing your cleaning cloth, do not use fabric or paper that will disintegrate or leave particles that could interfere with the adhesive or contribute to airborne contamination.

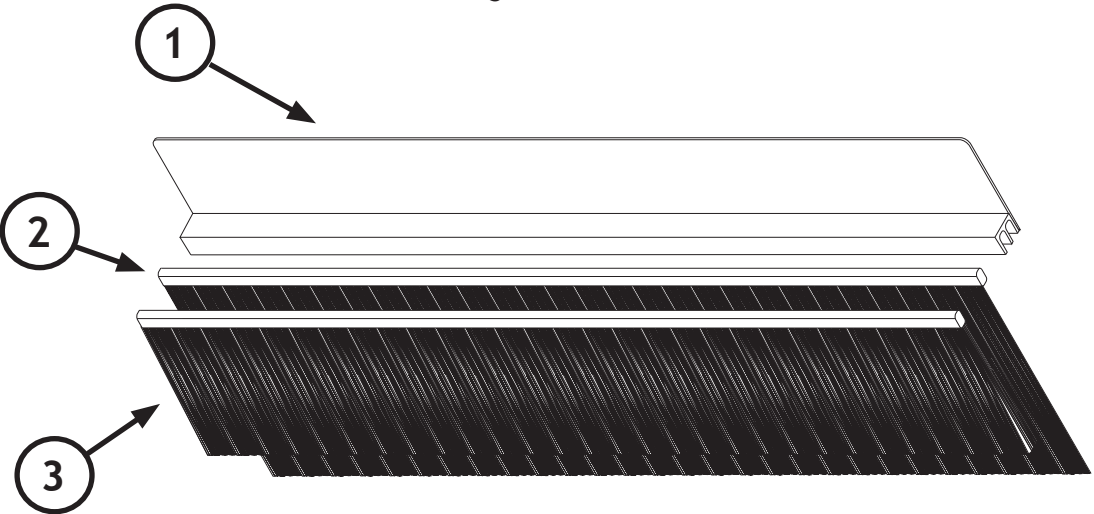
Product Components (see Figure 1)

- 1. KoldLok Extended Raised Floor Grommet Metal Extrusion
- 2. Removable Long Filament Brush
- 3. Removable Short Filament Brush (support brush)

Not Shown

Optional Non-Particulating Double Sided Adhesive Tape - 36 Yard Roll: Part No. 20107
Optional Self-Tapping Screws - 600 Pieces: Part No. 20197

Figure 1

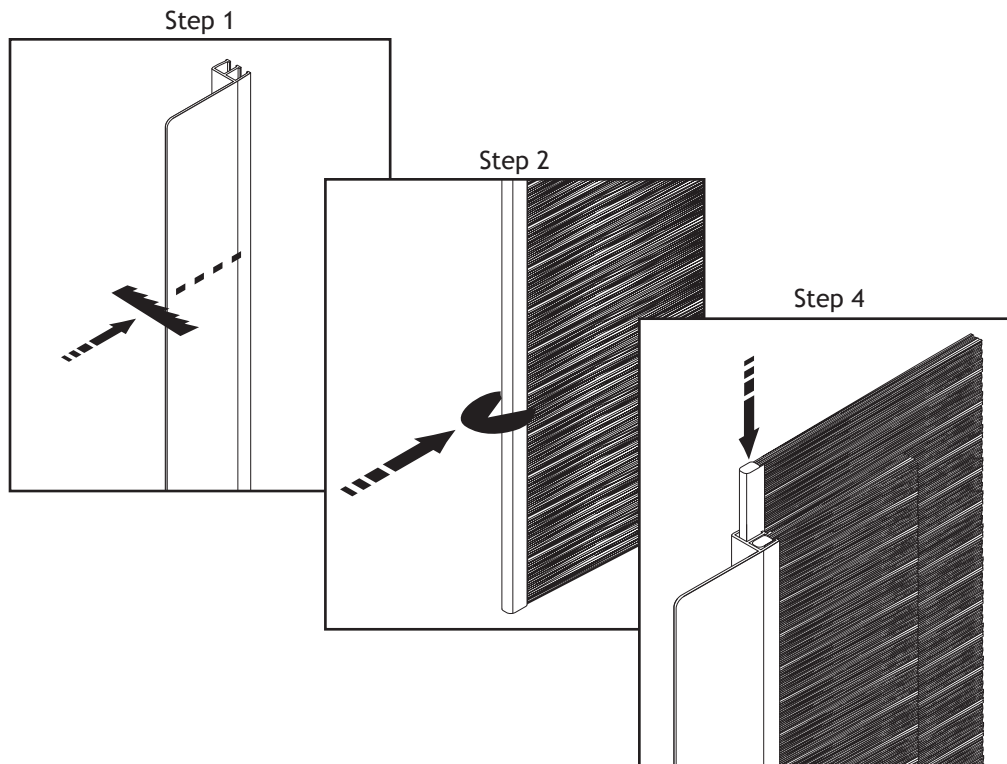


Modification of Grommets

KoldLok Extended Grommets can be modified to seal large and unique openings in the raised floor. The KoldLok 60" Extended Grommet will come complete with a removable short filament brush (support brush), a removable long filament brush and the metal extrusion. The metal extrusion and brushes may be cut to a desired length.

***IMPORTANT:** Data center best practices indicate that metal should not be cut within the raised floor environment in order to protect equipment from harmful particulates. However, quick clean up of any debris or loose particulates is always recommended.

1. Cut the metal extrusion with an appropriate cutting tool. File any rough or sharp edges.
2. Measure and cut both long and short filament brushes with bolt cutters. Crimp the ends of the channels with pliers or a vice to prevent bristles from falling out.
3. Bend brush filament frames slightly, in order to secure them in the metal extrusion channels.
4. Use a hammer (or mallet) to maneuver the brush into the metal extrusion so that all components are flush. **NOTE:** Short filament brush should be installed in the bottom extrusion channel in all installations.



Installation Procedure with Self-Tapping Screws

***IMPORTANT:** If the KolkLok Extended Raised Floor Grommets are being installed in an active data center, if possible, remove the floor tile and install the grommet outside of the data center to prevent the risk of particulates.

1. Position the grommet over the cable cutout, with the metal extrusion resting on the floor tile and grommet brush filaments covering the cutout.
2. Ensure the metal extrusion does not rest on top of any cutout trim. If the grommet cannot be placed without resting on the cutout trim, install the grommet with double sided adhesive tape. See Installation Procedure with Double Sided Adhesive Tape below.
3. Once the grommet is positioned as desired, drive a self-tapping screw through the metal extrusion to attach the grommet to the raised floor.
4. Grommet may be installed with the extrusion facing up (surface mount) or down (flush mount) depending on specific site placement requirements.
5. If the grommet is installed flush mount (with the metal extrusion facing down), then place the short brush filament (support brush) on the bottom.

NOTE: Short filament brush should be installed in the bottom extrusion channel in all installations.

Installation Procedure with Double Sided Adhesive Tape

1. Measure double sided adhesive tape and cut to appropriate length with scissors. Remove one layer of adhesive backing and place tape firmly onto grommet frame.
2. Remove the second layer of adhesive backing from the tape. Position the grommet on the floor tile and over the cable cutout.
3. Adhere the unit to the floor. Press down firmly on all portions of the unit to ensure a secure connection to the raised floor surface.
4. If the grommet is installed flush mount (with the metal extrusion facing down), then place the short brush filament (support brush) on the bottom.

General Information

Effective Installation of Cables

In order to minimize any air loss from under the raised-floor plenum, allow for adequate slack in the cables. If the cables are under too much tension, the grommet filaments may be pulled apart, resulting in a V-shaped gap that will cause an increase in the volume of air escaping from under the raised floor.

Cutting Raised Floor Tiles

Each raised floor tile manufacturer provides instructions to properly and safely modify their products. Installers must be familiar with and observe tile manufacturer's recommendations with regard to applicable tools, cutting procedures, the design load capacity of the cut tile, and any additional underfloor support requirements for cut raised floor tiles.

When installing the KoldLok Extended Raised Floor Grommet on a newly cut hole, trim the cutout prior to installation to protect cables from damage.

Maintaining Proper Cooling of Equipment

Failure to follow computer manufacturer's guidelines for maintaining proper cooling may result in the overheating of equipment. Ensure that there is adequate airflow to the intake side of the computer equipment or cabinets through devices such as perforated floor tiles or grates. Achieving proper airflow to the intake side of computer equipment and/or cabinets is the responsibility of the customer.

Safety Requirements

Installers must be familiar with standard safety and risk management practices when working on server rack equipment or in data center environments.

Customer Support

If you have any questions, please contact us direct at (505) 798-0200 or Toll Free at (888) 982-7800 Email us at info@upsite.com



P/N 60227 Rev. A © 2012

Limited Warranty

Upsite Technologies, Inc. (the *Company*) warrants to the original purchaser that products delivered hereunder will be free of defects in materials and workmanship for a period of twelve (12) months from the date of purchase (the “Warranty Period”).

The *Company* shall, at its option, within the Warranty Period, either repair or replace free of charge, any product or part thereof found, upon the *Company*’s inspection, to be defective in materials and workmanship, and will return the repaired or replaced product to the purchaser at *Company*’s expense.

For warranty service and shipping instructions, contact the *Company* at the telephone number shown below. If the product is under warranty and the defect appears to be covered by this Limited Warranty, the *Company* will issue to the purchaser a Notice of Authorization For Warranty Return. Products returned to the *Company* for warranty service must be accompanied by a statement of defect, the Notice of Authorization for Warranty Return provided by the *Company*, and proof of purchase.

This Limited Warranty is conditioned on the following:

1. The *Company* must be notified within 12 months of purchase and have been given the opportunity of inspection by return of any alleged defective product free and clear of all liens and encumbrances to the *Company* or its manufacturer; and
2. The product must not have been abused, misused, or improperly maintained, and/or repaired during such period; and
3. Such defect has not been caused by corrosion or exposure to other than ordinary wear and tear; and
4. The installation and use of the product has been in accordance with the manufacturer’s instructions and not been modified or customized to include but not limited to cut, resized, burned, glued, bent, re-shaped, disassembled, attachments added to, improperly installed or used in a manner other than intended.

The company makes no other express or implied warranty or representation of any kind whatsoever including any warranty of merchantability or fitness for a particular purpose and all such other warranties are hereby included.

The *Company*’s maximum liability hereunder is limited to the purchase price of the product. In no event shall the *Company* be liable for any consequential, indirect, incidental, or special damages of any nature arising from the sale or use of the product, whether based in contract, tort, strict liability, or otherwise.

Note: Some jurisdictions do not allow limitations on incidental or consequential damages or how long an implied warranty lasts, so that the above limitations may not fully apply. This warranty gives specific legal rights and you may also have other rights which may vary from jurisdiction to jurisdiction.

For complete warranty and repair information Call (888) 982-7800 or visit upsite.com

U.S. Patent No. 6,632,999 and International Patents Pending



For Sales and Installation, contact:



(800) 328-2256 • www.dataclean.com