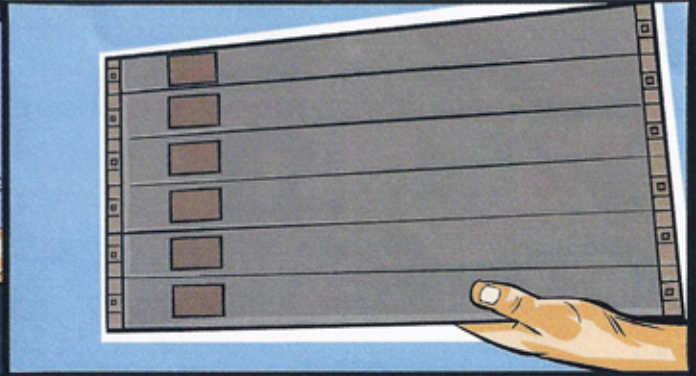
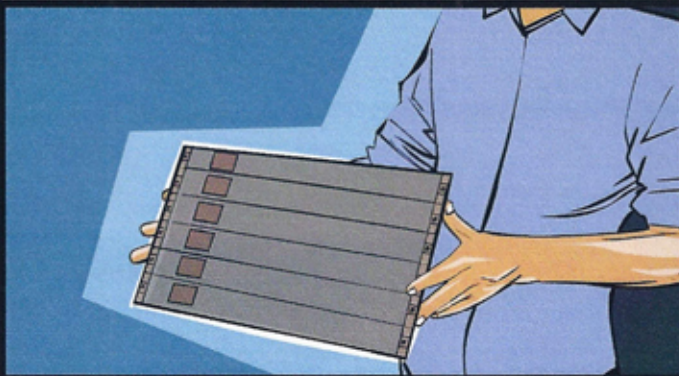
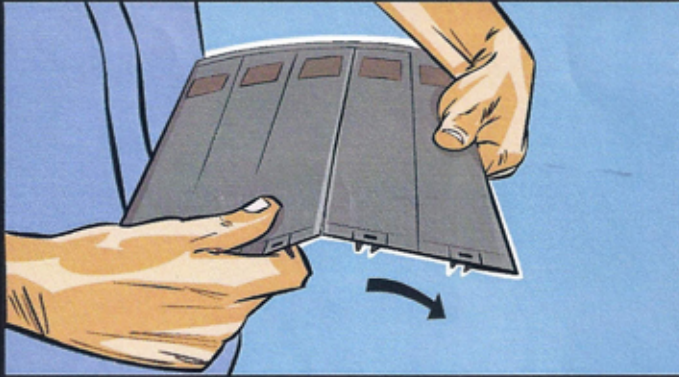


Data Clean[®]

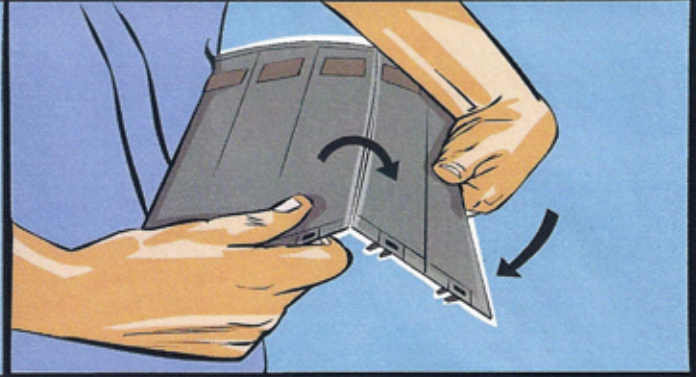
EZIBLANK[®]



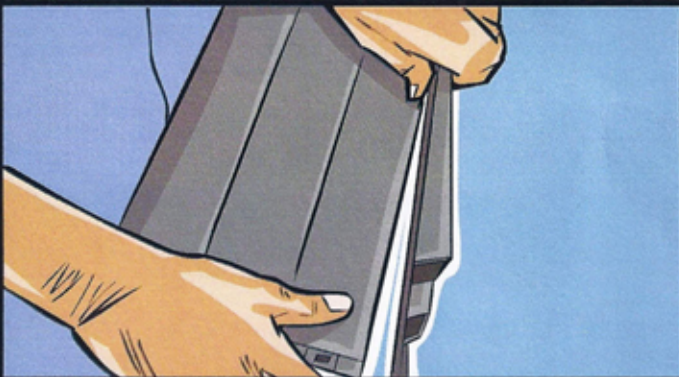
Take 1 Eziblack[®] panel and select the number of rows required. Grasp the underside of the panel at the row division required.



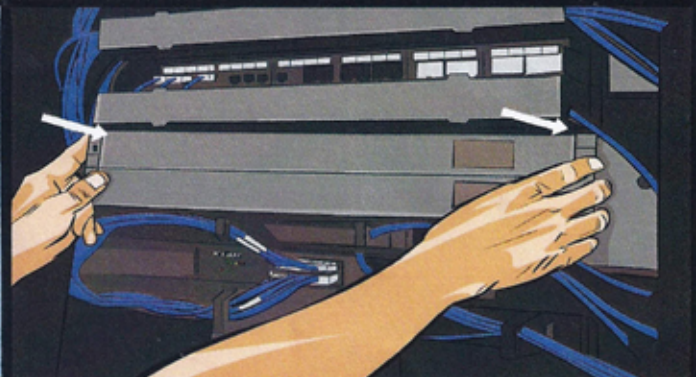
Firmly bend along the indentations on the panel.



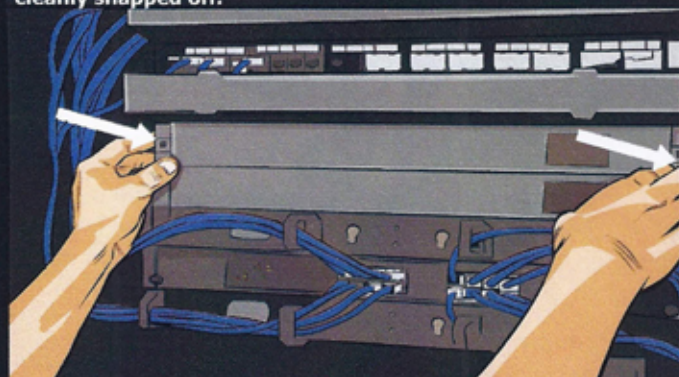
Keep bending until a break appears between rows.



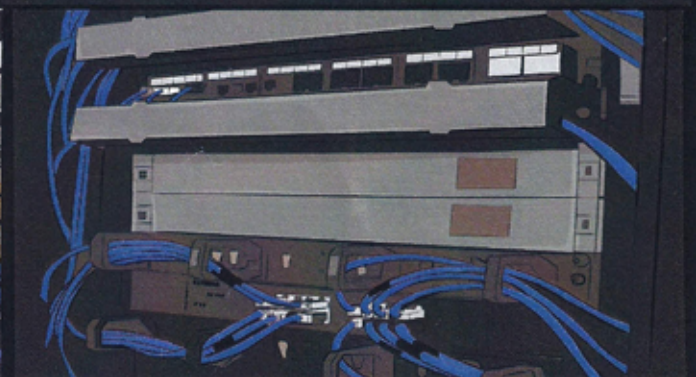
Bend the panel in the opposite direction until it has cleanly snapped off.



Place the panel in the required position on the server rack



Snap the clips on the back of the panel into the holes on either side of the rack.



Your Eziblack[®] panel should now be in place and already saving you money!