



Features

Universal Tool-Free Mounting designed for ease-of-use and rapid deployment.

Robust, flame retardant ABS plastic panel that meets the most demanding requirement.

Patented Snappable Design offers greater flexibility when applying on different sizes of RU height.

Scratch Resistance Textured Surface that offers both aesthetic appearance and industrial durability.

Recyclable Lightweight Plastic that is both durable and environmentally friendly.

The best 6RU blanking panel that fits any 19" rack cabinet.

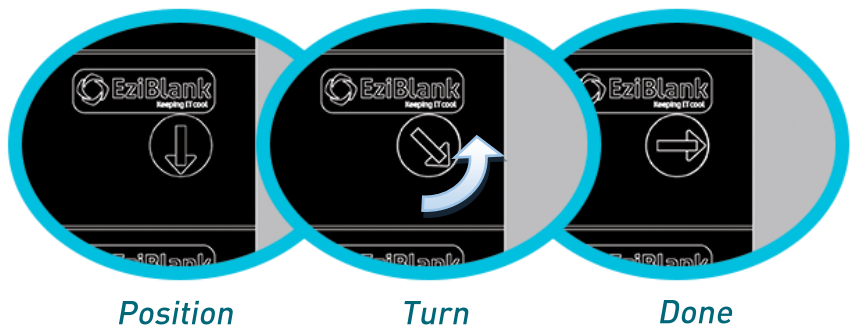
EZIBLANK® 6-RU Blanking Panel is a well received innovative data center product that is made of the highest quality flame retardant ABS plastic. The latest addition of EziBlank® Blanking Panels is assembled with specially designed knob latches that are made of medical grade thermoplastic elastomer rubber. The panel also has moulded positioning studs to assist with the alignment of the panel so that it can be installed easily onto any EIA-310-D compliant 19" server rack regardless of the type of mounting hole.

The modular feature of the EziBlank® 6-RU Blanking Panels makes it the perfect server rack accessory for data center operators where separated panels can be installed and reused onto different RU heights of unused space.

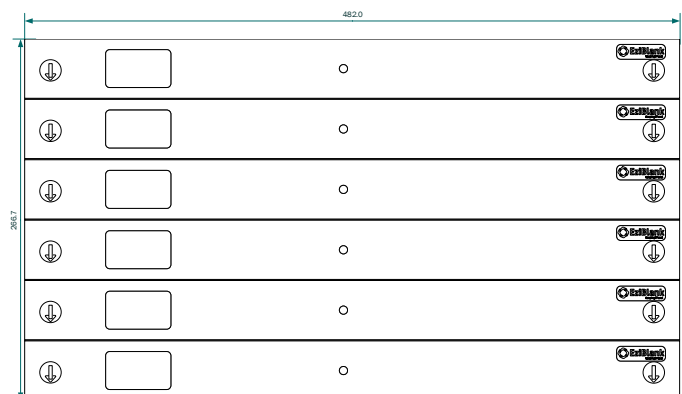
Specifications:

Physical	
Dimensions:	270 x 483 x 19 (6RU Panel, in mm)
Weight:	12.35 ounces per panel.
Packaging:	500 x 300 x 130 (mm)
Material:	Panel: Impact resistant, water resistant, anti-static ABS plastic Knob Latch: Ethylene Propylene Thermoplastic elastomer (EPTR)
Colors:	Black. For custom color, please contact us for assistance.
Conformance	
Standards:	EIA-310-D Mounting Hole Spacing
Environmental:	RoHS
Toxicity	Non toxic and resistant to chemicals
Reliability	UL-508A Standard for Industrial Control Panels for the main panel.

Locking mechanism:



Dimensions (mm):



Ordering Information:

BKPNL01U
EZIBLANK® 6-RU Blanking Panel (Universal, Black, Pack of 10)

For Sales and Installation, contact:



(800) 328-2256 • www.dataclean.com